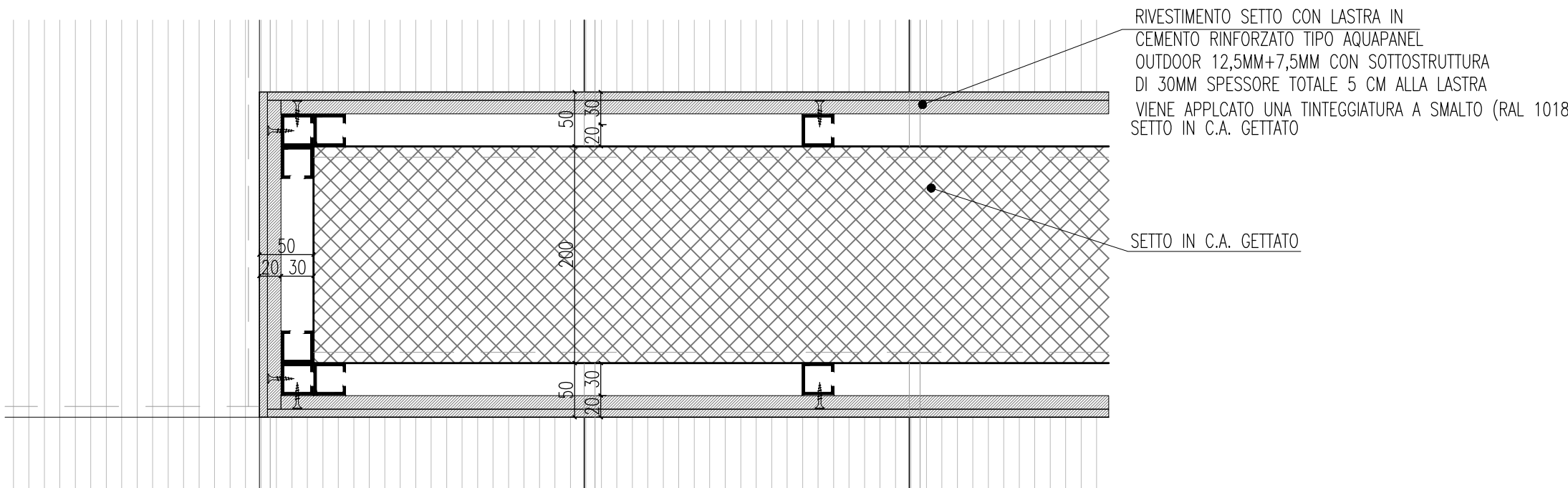
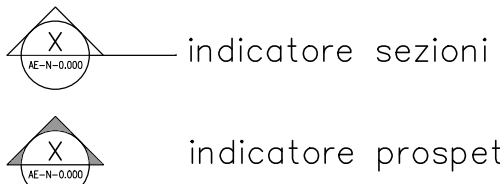
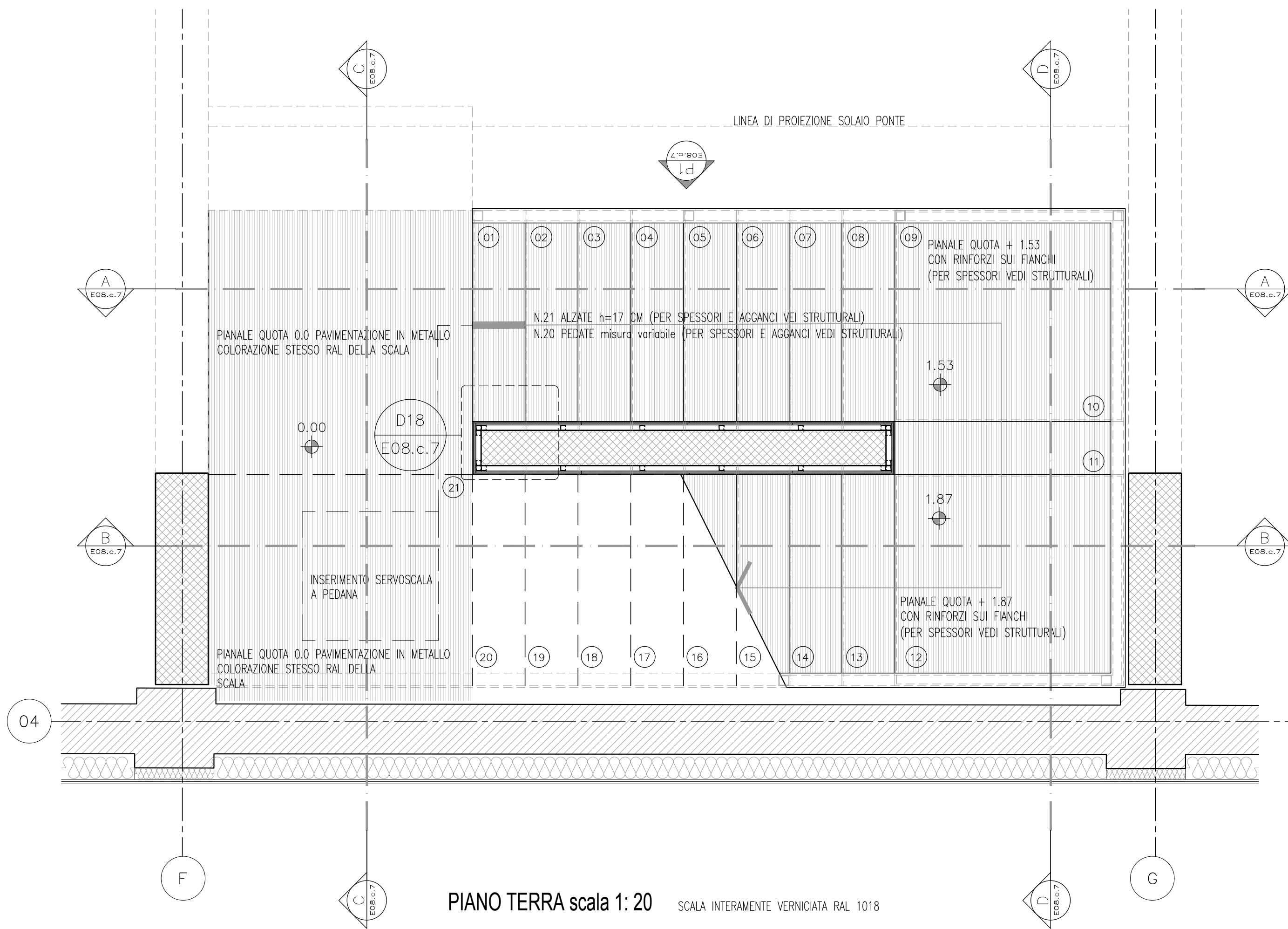
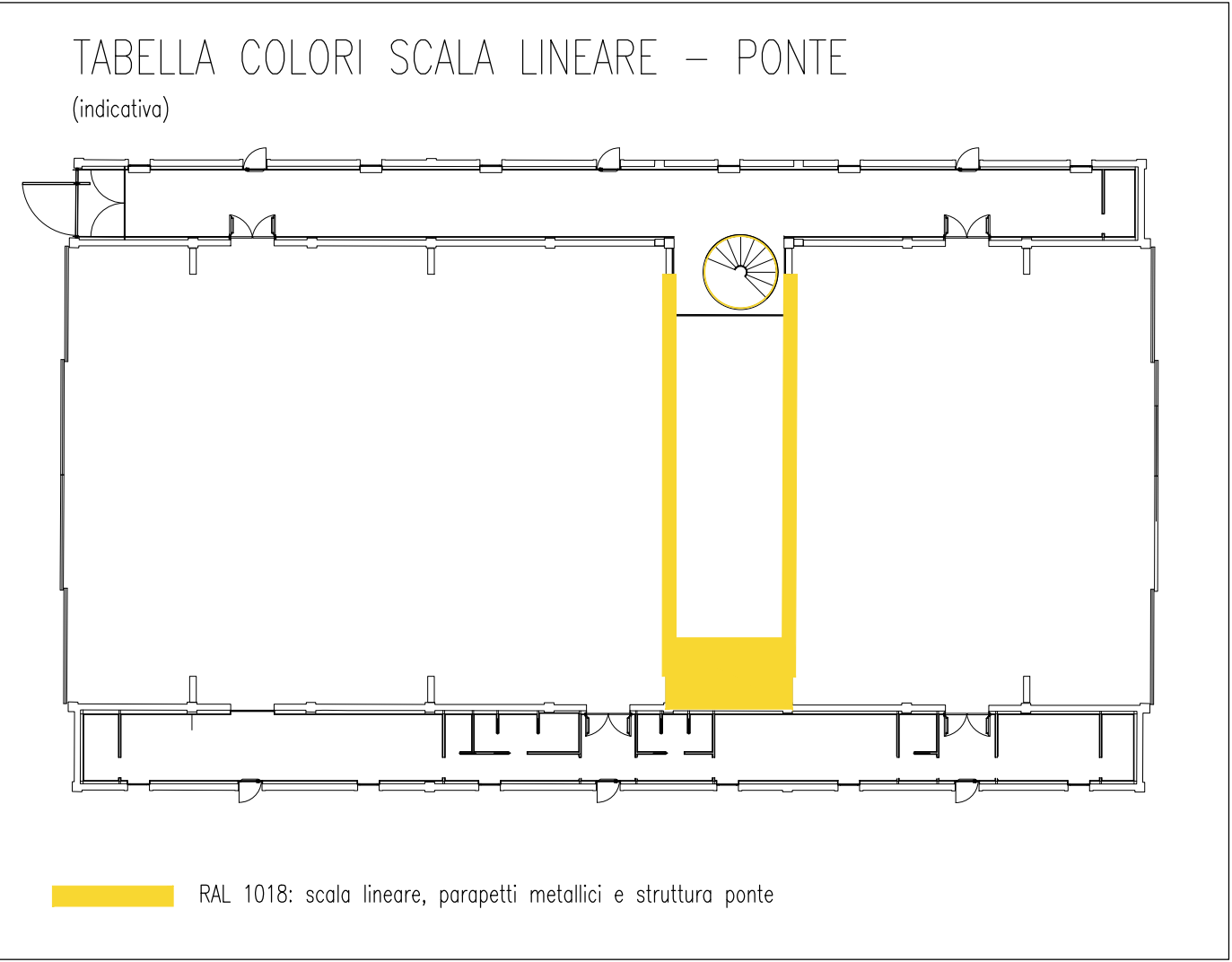


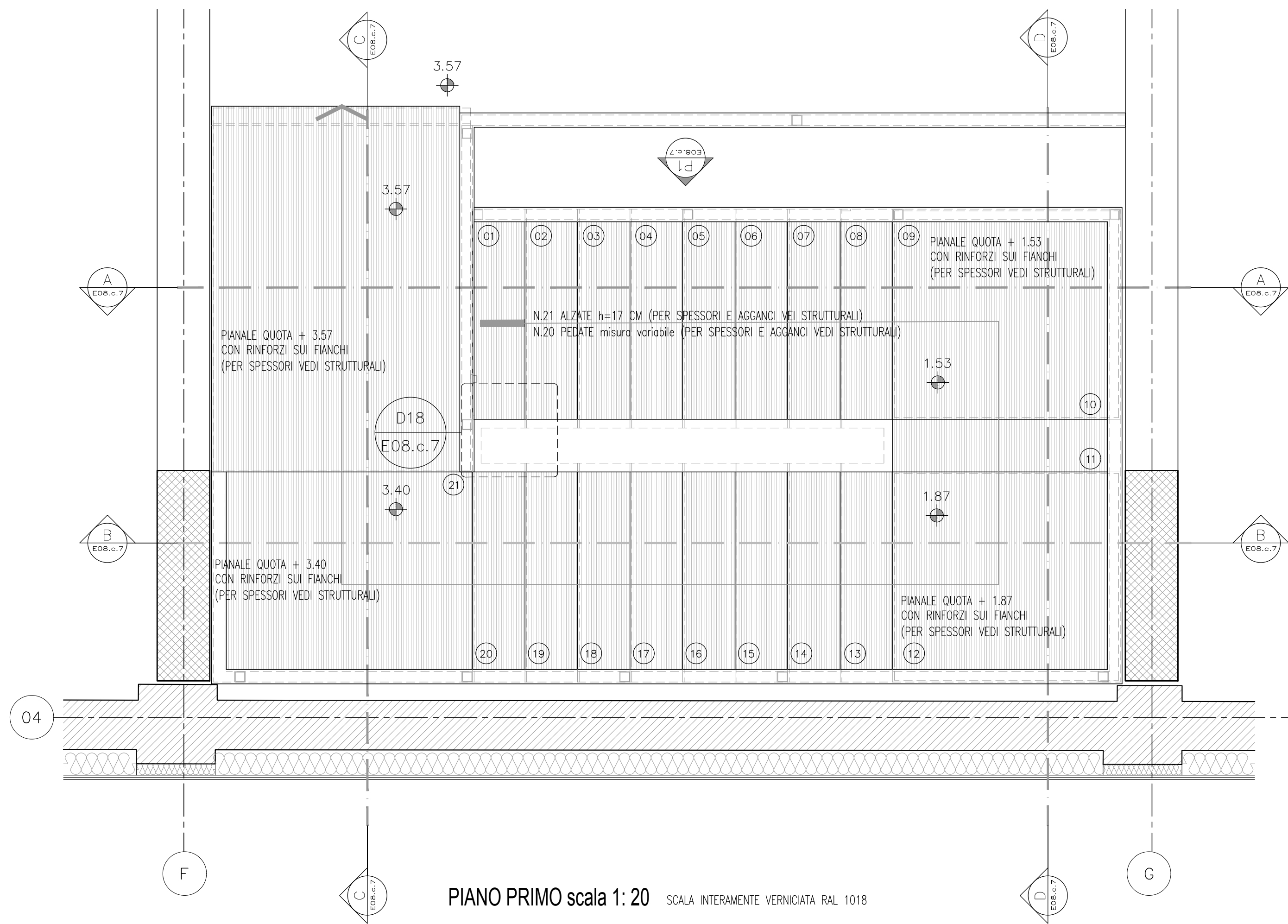
legenda



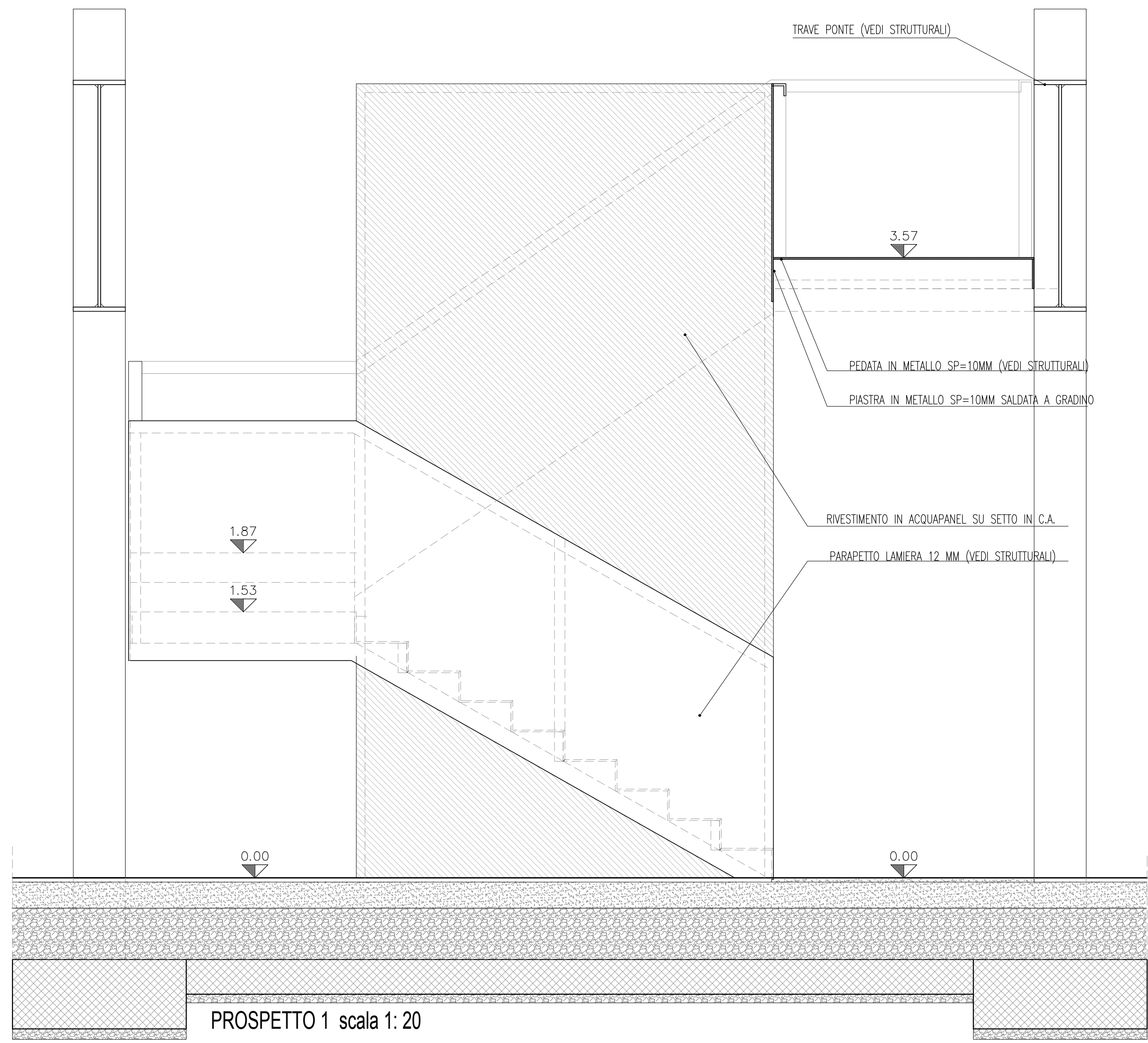
D18 DETTAGLIO ATTACCO GRADINO. SCALA 1:5



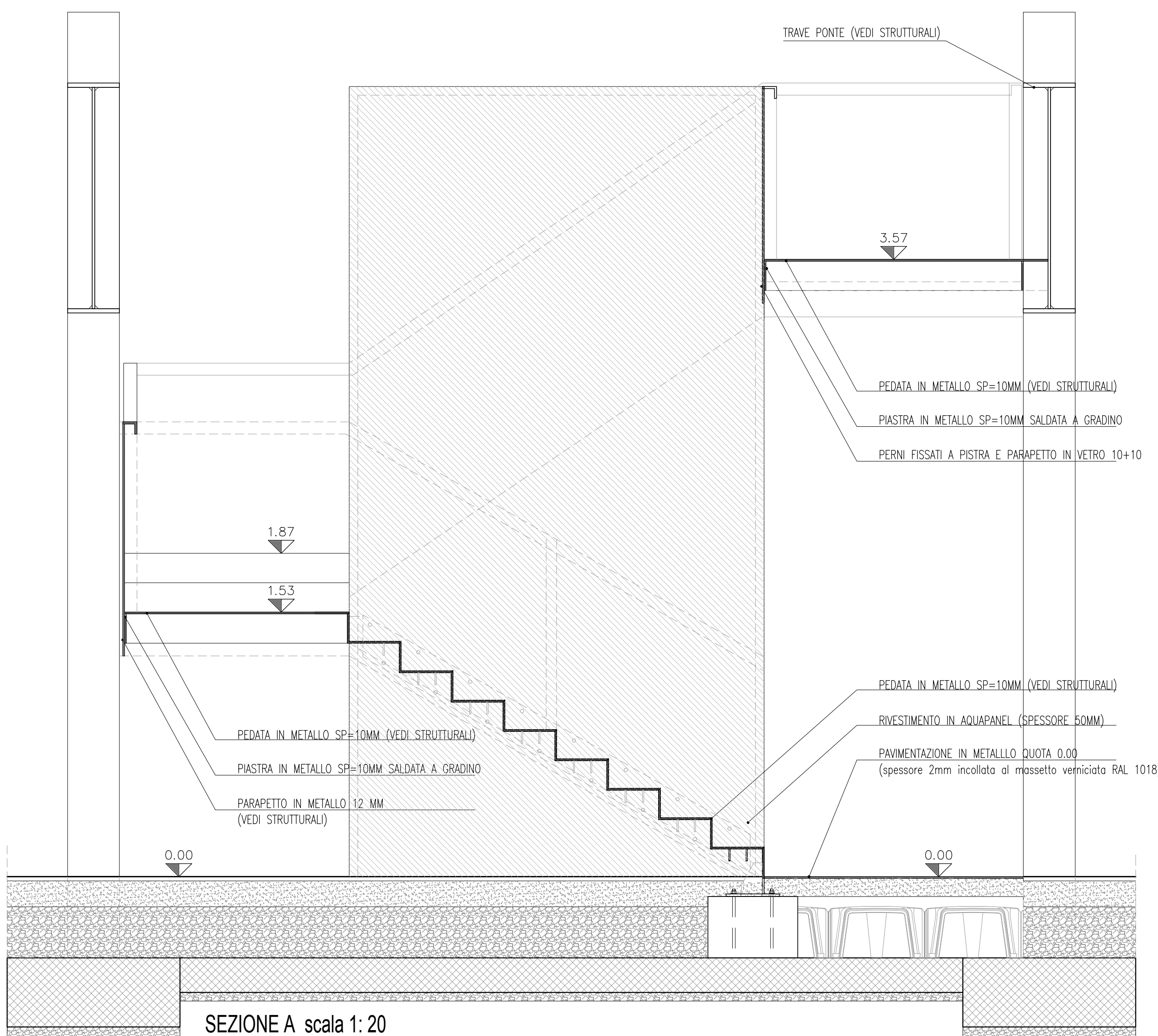
PIANO TERRA scala 1:20. SCALA INTERAMENTE VERNICATA RAL 1018



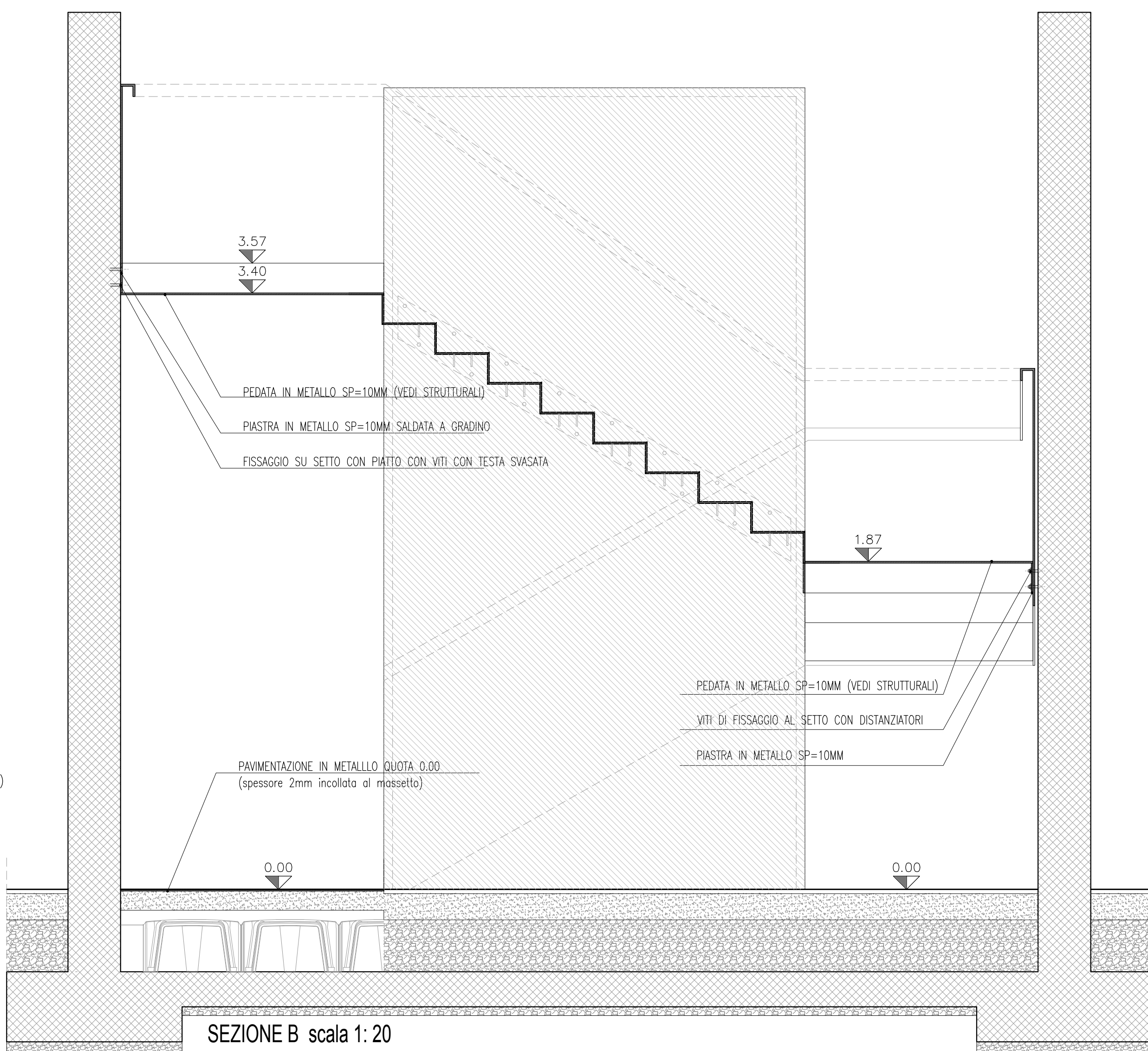
PIANO PRIMO scala 1:20. SCALA INTERAMENTE VERNICATA RAL 1018



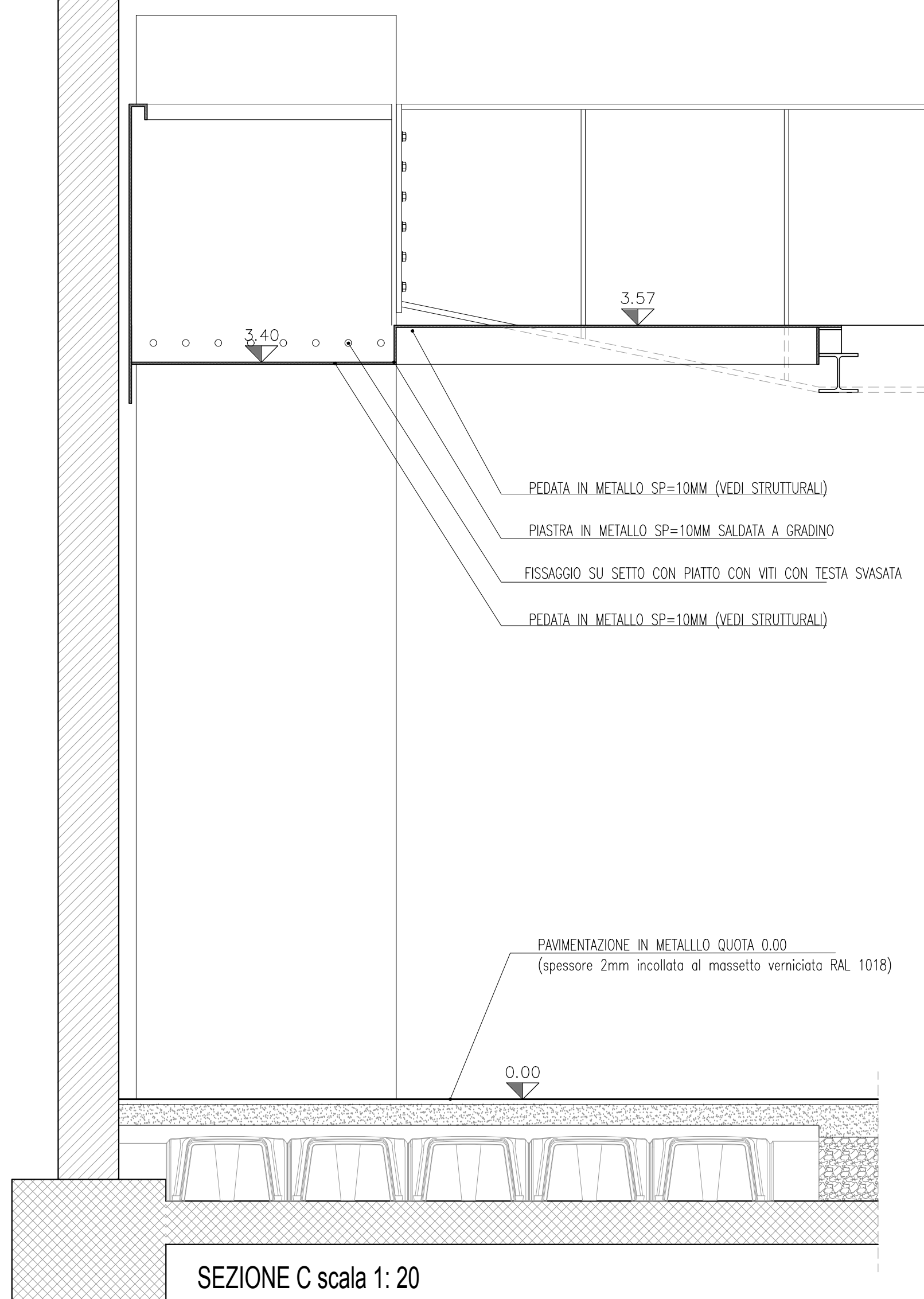
PROSPETTO 1 scala 1:20



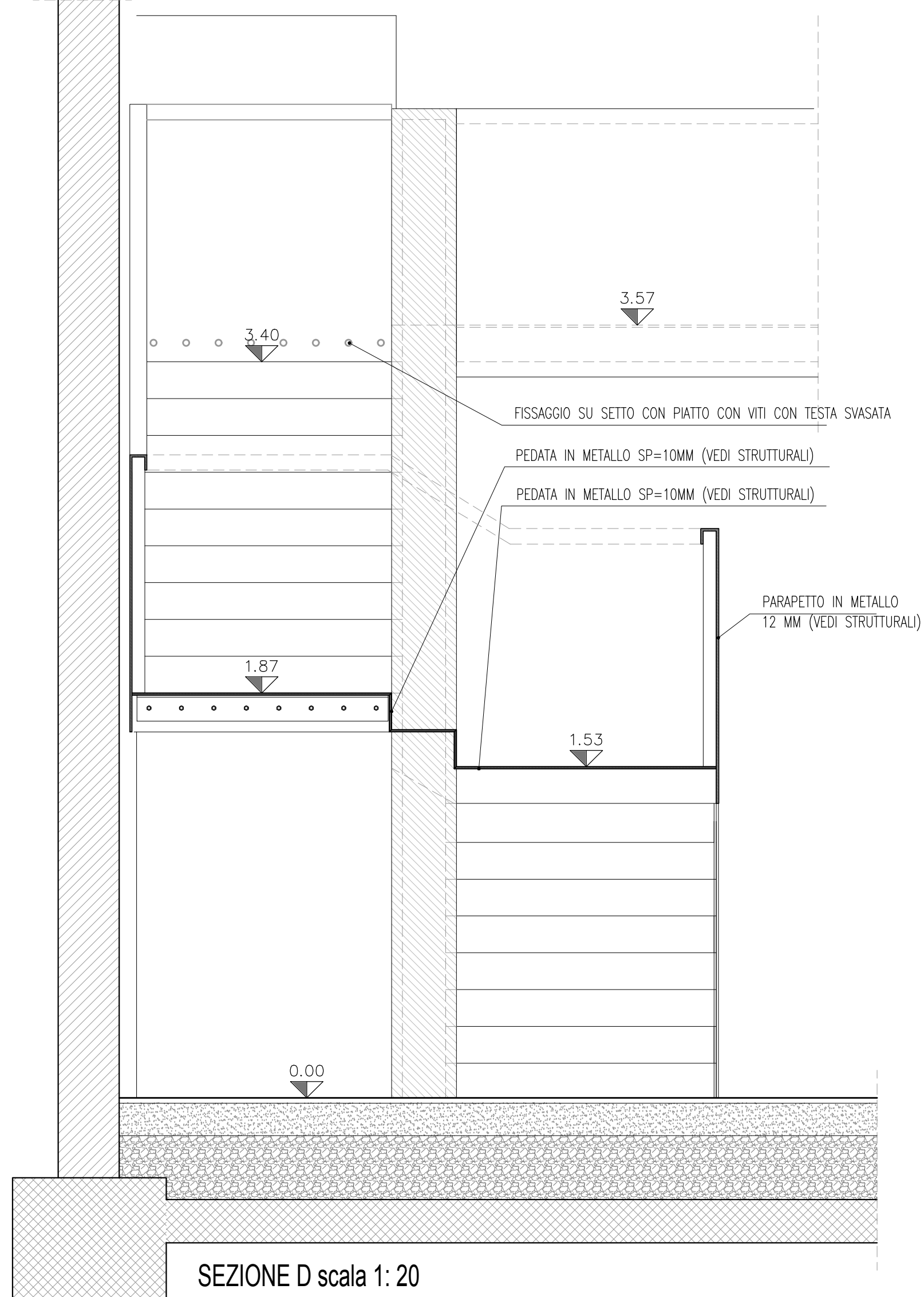
SEZIONE A scala 1:20



SEZIONE B scala 1:20



SEZIONE C scala 1:20



SEZIONE D scala 1:20

COMUNE DI VICENZA
DIPARTIMENTO TUTELA E GESTIONE DEL TERRITORIO
Settore Ambiente, Energia e Tutela del territorio

PARCO DELLA PACE
ATI - registrata a Milano l'11.12.2015 n°44454 serie IT
capogruppo: PAN ASSOCIATI SRL

progettisti Giancarlo Sestini, Benvenuto Solari
collaboratori Giuseppe Chiarini, Davide Basso, Pietro Annali

progettisti Daniele Nanni
collaboratori Andrea De Pini, Carolina Sestini, Matteo Tassinari, Matteo Paganini

progettisti Franco Zappalà
collaboratori Viola Corbelli, Ennio Mengoni, Sarah Armati, Leonardo Zappalà

progettisti E&P
collaboratori Helmut Böger

responsabili del servizio Claudio Bernelli, Francesco Del Toso
collaboratori Giacomo Casarini

progetto definitivo - esecutivo
Hangar Museum
dettagli scala lineare a rampa

REDAZIONE: ASPRO STUDIO
DATA: 09/06/2017
DESCRIZIONE: 00

VERIFICATO: 09/06/2017
DESCRIZIONE: 00

APPROVATO: 09/06/2017
DESCRIZIONE: 00

SCALE: 1:5
1:20

TAV. E08.c.7